



SALES PRESENTATION

THE INTRODUCTION OF THE TG165-X

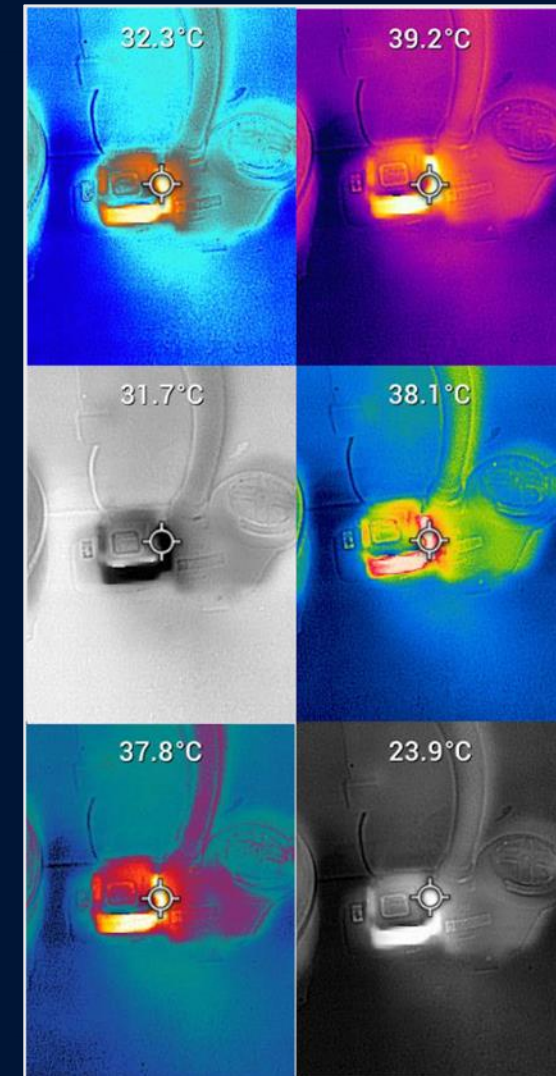
JUNE 2020



THE TG165-X MSX[®] THERMAL CAMERA

The FLIR TG165-X helps you visualize the hot and cold spots that can indicate electrical faults, mechanical break-downs, or air and water leaks. This all-in-one, non-contact measurement and imaging tool displays temperature anomalies on screen, allowing you to inspect efficiently and pinpoint the source of the problem faster than with a single-spot IR thermometer.

See components clearly and even read labels with the FLIR patented MSX image enhancement, which adds full visual details to full thermal images. The bullseye laser ensures you're always targeting the right component for measurement while easy-to-use buttons and settings help you complete the job quickly and stress-free. With internal storage for up to 50,000 images and rechargeable Li-ion battery, the FLIR TG165-X is ready to go right out of the box.



TG165-X COLOR PALETTE

AN ALL-IN-ONE TOOL

TEMPERATURE & IR PLUS VISUAL IN ONE TROUBLESHOOTING TOOL

- ✓ Replaces existing TG165
- ✓ Target areas using **bullseye laser** pointer
- ✓ Capture **MSX** and **visual images**
- ✓ Easily view live images on larger **2.4-inch display**
- ✓ See into dark or hard-to-reach areas with **LED flashlight**



FEATURES OF THE TG165-X MSX[®]



TG PRODUCT LINE

DISCONTINUED



TG165

- 80x60
- -25°C to 380°C
- General Use



TG267 (MSX)

- 160x120
- -25°C to 380°C
- Electrical/HVAC



TG275 (MSX)

- 160x120
- -25°C to 550°C
- Automotive



TG297 (MSX)

- 160x120
- -25°C to 1030°C
- Industrial High Temp

NEW - TG PRODUCT LINE

NEW



TG165-X (MSX)

- 80x60
- -25°C to 380°C
- General Use



TG267 (MSX)

- 160x120
- -25°C to 380°C
- Electrical/HVAC



TG275 (MSX)

- 160x120
- -25°C to 550°C
- Automotive



TG297 (MSX)

- 160x120
- -25°C to 1030°C
- Industrial High Temp

TG165 vs TG165-X



	TG165	TG165-X
Resolution	80x60	80x60
Screen size	2"	2.4"
MSX [®]	No	Yes
Visual camera	No	Yes, (incl temperature reading)
LED, worklight	No	Yes
Laser	Dual diverging	Bullseye
File format	BMP	JPEG (non radiometric)
Temperature range	-25 to 380°C	-25 to 380°C
Color palettes	2	6
Pouch included	No	Yes

Bigger screen

MSX allows visual image with thermal image

Easier to identify specific target

IN THE BOX



- TG165-X
- Pouch
- USB cable
- Lanyard
- Shoulder strap
- Documentation



The World's **Sixth Sense**®